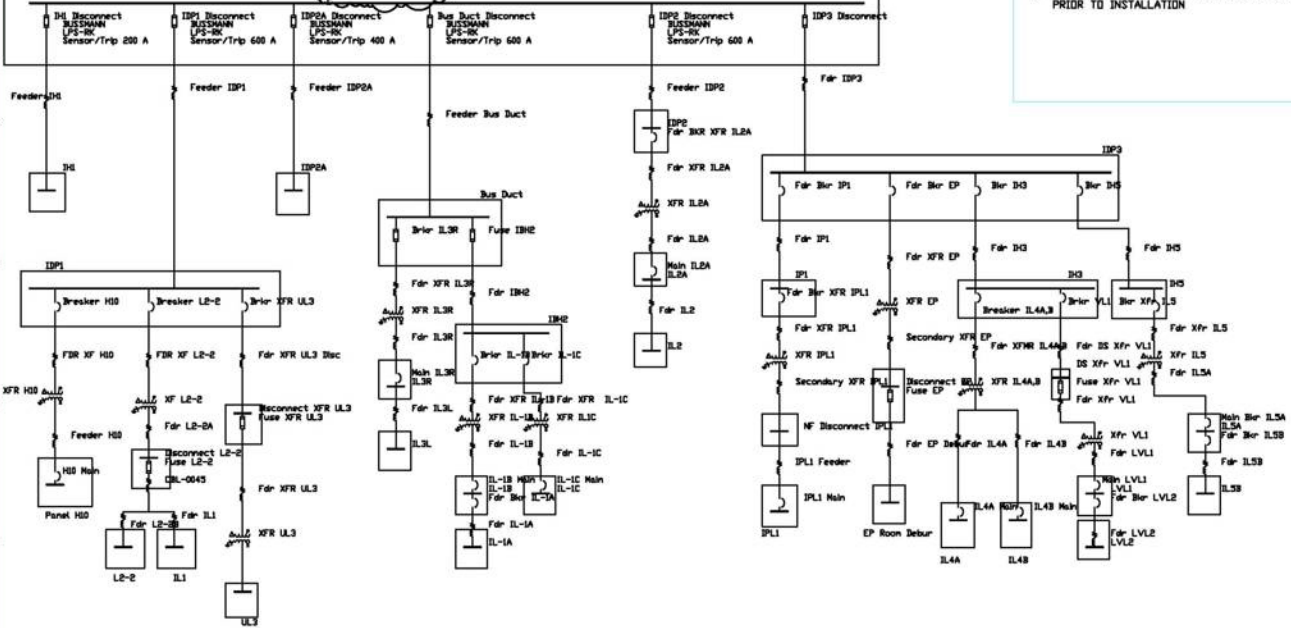


GENERAL NOTES:

1. ALL WORK SHALL COMPLY WITH LOCAL AND NATIONAL CODES.
2. FIRMLY SECURE ALL ELECTRICAL EQUIPMENT TO THE SURFACE ON WHICH IT IS MOUNTED.
3. ALL WALL PENETRATIONS THROUGH FIRE RATED WALLS SHALL BE FIRE STOPPED WITH MATERIAL SUITABLE TO MAINTAIN FIRE RATING.
4. GROUND FAULT BREAKER TESTING 3RD PARTY PRIOR TO INSTALLATION



ELECTRICAL DESIGN

MCDEAN
ELECTRICAL ENGINEERING

SERVICE & CRITICAL SUPPORT ATLANTA

1000 WILSON BLVD. #200
DUNWOODY, GA 30328
www.mcdean.com

REV	DATE	DESCRIPTION
1	3/15/2007	30% DESIGN REVIEW
2	3/15/2009	

PROJECT NO: 08700.002
 CAD FILE: E01.1
 DRAWN BY: JFW
 REVIEWED BY: JFW

SHEET TITLE